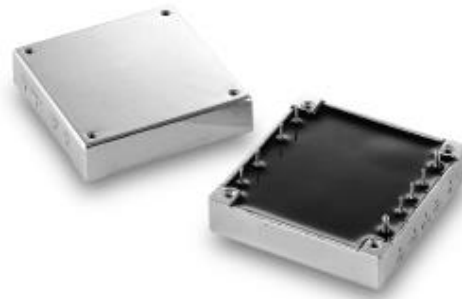




## 49,5 to 75 Watt Wide Input DC/DC Converters Series DV752H



### Features

- 49,5 - 75 Watt Isolated Output
- Regulated Outputs
- 2 : 1 Wide Input Range
- 300/400 KHz Switching Frequency
- Safety EN60950-1 and IEC60950-1
- CE Mark Meets 2006/95/EC, 93/68/EEC, 89/336/EEC
- Efficiency to 89%
- Continuous Short Circuit Protection
- Five-Sided Metal Case
- Industry Standard Half-Brick Package
- UL60950-1 Approval

MODEL NUMBER	INPUT VOLTAGE [ VDC ]	OUTPUT VOLTAGE [ VDC ]	OUTPUT CURRENT [ A ]	INPUT CURRENT NO LOAD [ mA ]	INPUT CURRENT Max. LOAD [ mA ]	EFF. [ % ]	CAP. LOAD Max. [ $\mu$ F ]	CASE
DV9-18-3,3S15000H	9 – 18	3,3	15	50	5290	78	10000	H
DV9-18-05S15000H		5	15	50	7530	83	10000	
DV9-18-12S6250H		12	6,25	50	7183	87	10000	
DV9-18-15S5000H		15	5	50	7267	86	4000	
DV9-18-24S3130H		24	3,13	50	7183	87	2000	
DV18-36-3,3S15000H	18 – 36	3,3	15	50	2578	80	10000	H
DV18-36-05S15000H		5	15	50	3720	84	10000	
DV18-36-12S6250H		12	6,25	50	3551	88	10000	
DV18-36-15S5000H		15	5	50	3551	88	4000	
DV18-36-24S3130H		24	3,13	50	3551	88	2000	
DV36-75-3,3S15000H	36 – 75	3,3	15	50	1273	81	10000	H
DV36-75-05S15000H		5	15	50	1860	84	10000	
DV36-75-12S6250H		12	6,25	50	1755	89	10000	
DV36-75-15S5000H		15	5	50	1755	88	4000	
DV36-75-24S3130H		24	3,13	50	1755	89	2000	

NOTE: 1. Nominal Input Voltage 12, 24 or 48 Vdc

## INPUT SPECIFICATIONS:

Input Voltage Range.....	12V .....	9-18V
	24V .....	18-36V
	48V .....	36-75V
Input Surge Voltage.....	12V .....	25Vdc max.
	24V .....	50Vdc max.
	48V .....	100Vdc max.
Undervoltage lockout:.....	12Vin power up .....	>8,8V
	power down .....	>8V
	24Vin power up .....	>17V
	power down .....	>16V
	48Vin power up .....	>34V
	power down .....	>32,5V
Input Filter .....		Pi Type
Positive Logic Remote ON/OFF ( see note 2 & 3 )		

## OUTPUT SPECIFICATION:

Voltage Accuracy .....		±1,0%max.
Transient Response: 25% Step Load Change .....		<500µ sec.
External Trim Adj. Range .....		±10%
Ripple and Noise, 20 MHz BW .....	3,3V & 5V .....	20mV RMS / 75mV pk-pk max
	12V & 15V .....	30mV RMS / 100mV pk-pk max
	24V .....	100mV RMS / 240mV pk-pk max
Temperature Coefficient .....		±0,03%/°C max.
Short Circuit Protection.....		Continuous
Line Regulation ( From High Line to Low Line ) .....		±0,2% max.
Load Regulation ( From Full Load to Zero Load ) .....		±0,2% max.
Over Voltage Protection trip Range, % Vo nom .....		115-140%
Current Limit.....		110-150% Nominal Output
Start up time .....		5ms typ

## GENERAL SPECIFICATIONS:

Efficiency.....		See Table
Isolation Voltage.....	Input/Output .....	1500 VDC min.
	Input/Case .....	1500 VDC min.
	Output/Case .....	1500 VDC min.
Isolation Resistance .....		10 <sup>7</sup> Ohm min.
Isolation Capacitance .....		1000pF typ.
Switching Frequency .....	12V & 24V Vin .....	400KHz typ.
	48V Vin .....	300KHz typ.
Operating Case Temperature Range.....		-40°C to +100°C
Storage Temperature Range .....		-55°C to +105°C
Thermal Shutdown, Case Temp. ....		100°C typ.
Humidity .....		95% RH max. Non condensing
MTBF (MIL_STD-217F,GB,25°C, Full Load).....		1000Khrs typ.
Dimensions .....		2,28 x 2,40 x 0,50 inches ( 57,9 x 61,0 x 12,7 mm )
Weight.....		92 g
Case Material .....		Aluminum

### NOTE:

3. Logic Compatibility ..... Open Collector Ref. To -Inut  
Module ON ..... Open Circuit  
Module OFF ..... < 0,8Vdc
4. Suffix "N" to the Model Number with Negative Logic Remote ON/OFF.
5. Output Ripple and Noise measured with 10µF tantalum and 1µF Ceramic capacitor across output.
6. Suffix "-C" to the Model Number with Clear Mounting Insert (3.2mm DIA)
7. On/Off Pin is not directly applied voltage, please refer to remote On/Off control circuit.

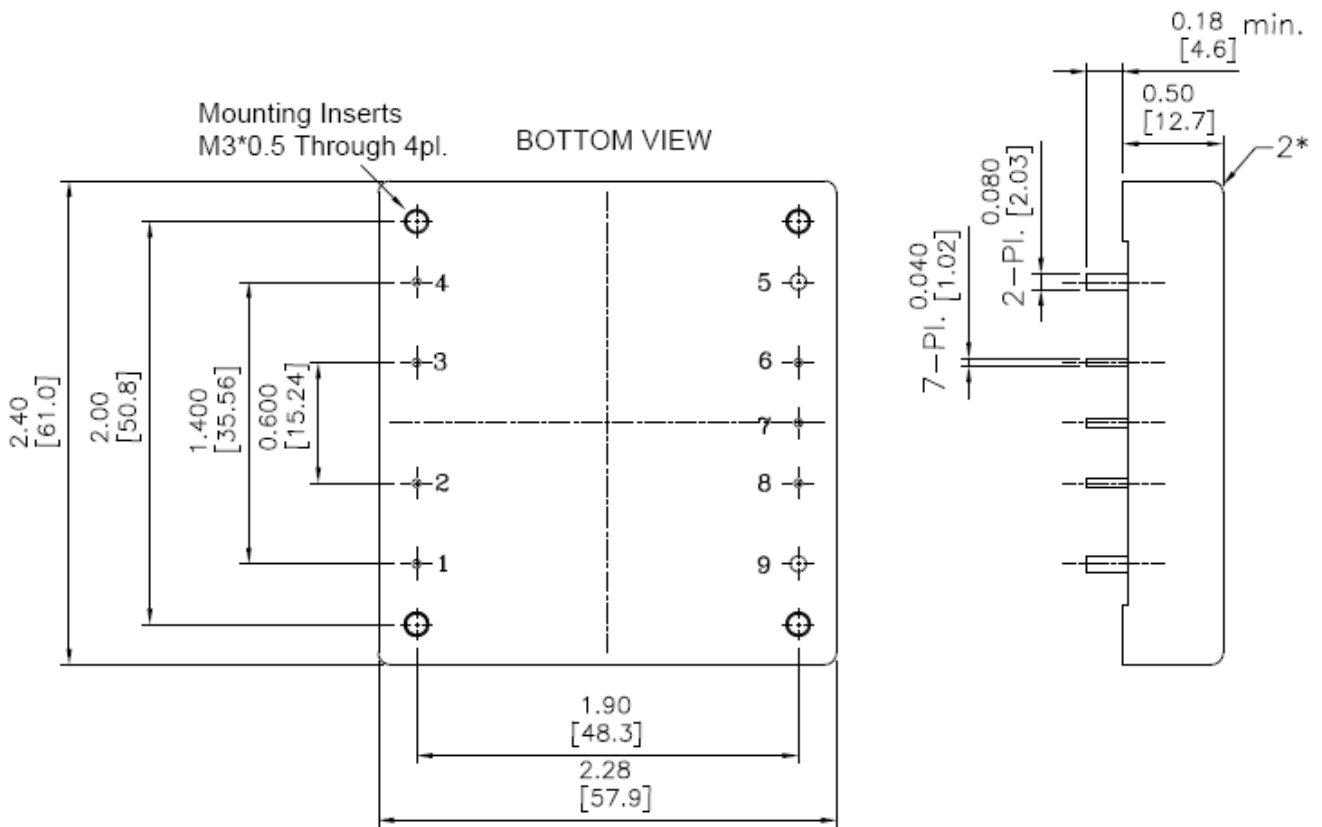
All Specifications Typical at Nominal Line, Full Load and 25°C Unless Otherwise Noted

# CASE H

# Series DV752H

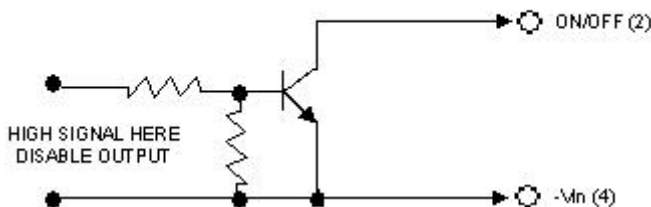
All Dimensions in Inches (mm)

Tolerance	Inches	.xx±.02	.xxx±.01	Pin ±0.02
	Millimeters	.x±.5	.xx±.25	Pin ±0.5

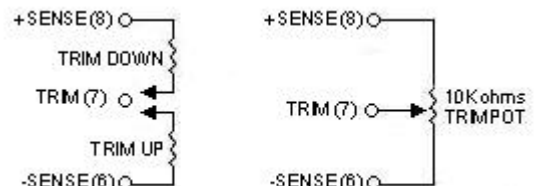


PIN CONNECTION	
Pin	Function
1	+V Input
2	Remote ON/OFF
3	Case
4	-V Input
5	-V Output
6	-Sense
7	Trim
8	+Sense
9	+V Output

## REMOTE ON/OFF



## OUTPUT TRIM



Technische Änderungen vorbehalten / Technical change reserved